

LEEDS METROPOLITAN UNIVERSITY  
**GALLERY  
& STUDIO  
& THEATRE**

Box Office 0113 812 5998  
[www.leedsmet.ac.uk/arts](http://www.leedsmet.ac.uk/arts)

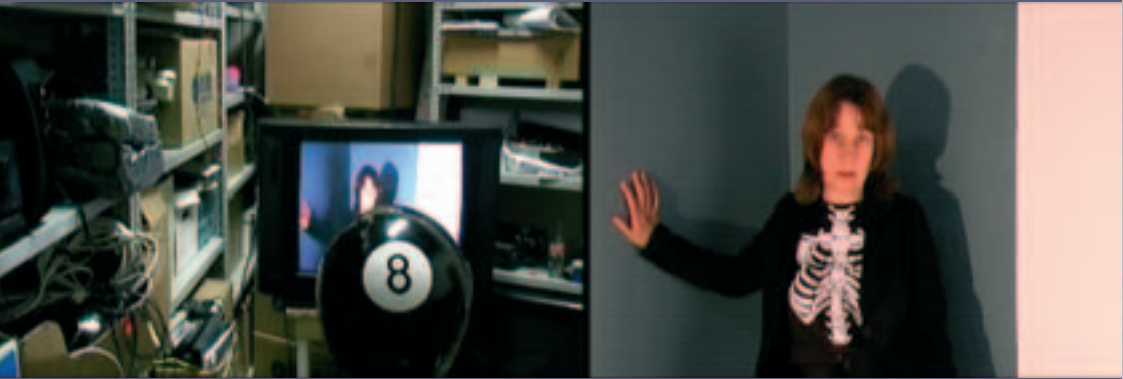
September – December 2007



Tuesday 18 September – Saturday 13 October

Clare Charnley

# The Gift of Tongues



Positioned and embarrassed by the global ascendancy of the English language, Clare Charnley dreams of combating this situation on a personal level by becoming an amazing linguist.

**The Gift of Tongues** sets out to momentarily trick its viewers into thinking that she has achieved this goal. Fluency in a dozen languages or more!

Numerous monitors show the artist giving a different speech in a different language. There are no subtitles. Sound levels are very low, you have to move close to hear clearly. The soundtracks together form a sort of murmur, punctuated by occasional bursts of laughter or applause.

Utilising images, sound and video footage from **SPEECH**, the artist's collaborative performances abroad, Clare Charnley explores her relationship with her mother language (English) and what happens when it is withdrawn.

Footage from all twelve **SPEECH** performances are presented here together, and to English audiences for the first time.



Tuesday 18 September – Saturday 13 October

**Leonor da Silva**

# 16 Shades of Grey



Produced using sixteen differing shades of grey pencil, this series of drawings is concerned with common heritages shared across cultural boundaries. The content of the drawings is wide and varied but representations of differing landscapes, and humanitarian issues relating to diaspora, global capitalism and commodification, are significant to each. Leonor da Silva's meticulously drawn pebbles and rocks (each referencing a particular personal journey), point towards shared historical legacies, in that while we are constrained by geographical distances, languages and cultural differences, stones and pebbles offer common ground to all people.

From a distance, each drawing appears to consist of vague masses of grey linear traces situated upon a dark surface but each image is infused with a multiplicity of layers and levels of focus, so that these large scale drawings serve to draw the onlooker in with their intricate detail.



Tuesday 23 October – Saturday 10 November

**Joash Woodrow (1927 – 2006)**

## Joash – A Retrospective

In association with The Joash Woodrow Family and 108 Fine Art, Harrogate.

Joash Woodrow, a Leeds-born painter trained at Leeds School of Art and the Royal College of Art with fellow students and friends: Frank Auerbach and Peter Blake. Shortly after graduating from the RCA in 1953 Joash suffered from a nervous breakdown, he then returned home to Leeds and subsequently withdrew from public life. In 2001 some 750 paintings and a further 4,000 smaller works were discovered after he was taken into sheltered accommodation, a find which led to the subsequent rediscovery of a previously unknown artist whose lifetime's work and story has attracted worldwide attention.

Hailed as a lost master, Woodrow's bold work shows heavy European influences including Picasso, Art Brut, Cobra, Tachisme and has been described as "fevered, highly coloured, expressionist" (Jackie Wullschlager). His paintings are now beginning to find their way into major public and private collections and exhibitions of his work have been held in public art galleries in Leeds, Hull, Manchester and London.

Joash Woodrow produced numerous evocations of urban and suburban Leeds, in particular his local area of Chapeltown. Now returning to his home town, Leeds Met Gallery presents the single largest retrospective of the artist's work to date.



**Far right:** Gilbert Looking Down.  
Oil on Hessian. 72 x 61cm

**Right:** City Landscape with Trees  
in the Foreground. Oil on board,  
circa 1980/85. 122 x 100cm



Saturday 17 & Sunday 18 November  
11am – 4pm

## On Your Wall

Ever dreamed of owning a piece of original art?

For one weekend only, Leeds Met Gallery, in association with Duvel beer, invite you to drop in, have a beer, browse and buy.

With a focus on a dozen carefully selected graduates and emerging artists from around the region, all works will be on sale. Prices will range from around £100-£1,000 so you can choose, buy and take home a unique and original piece of art to hang on your wall.

We're backing these artists and by purchasing their work you'll be helping us in our commitment to the development and support of a young talent at an early stage in their career.

"One of the most important times in an artist's career is that moment when they become commercial. You hope that if you are helping the gallery that is promoting them, then that gallery can keep up with the artist throughout their career. So you are helping both, and each is as important as the other. That feeling of attachment is a very good feeling." Anita Zabłudowicz, collector, London.



*Special Event – Light Night*  
Friday 12 October, 7pm-12am  
**plan b**

# Bed Full of Songs

1. In a double bed, sing as many songs as we can remember.
2. Write the song title and name of the recording artist/s on the duvet cover.
3. No two consecutive songs should be by the same artist.
4. For a song to count, it must be at least one verse and one chorus long.
5. The action is over when one side of the duvet cover is full of song titles.

In the intimate world of our bed we spend our night discussing only the music that we can dredge from our memories, the room strewn with pillows and easy chairs, lit only by the fairy lights above and around the bed. Hear long forgotten lyrics or puzzle out the name of an obscure band, come and go as you please, joining in with the songs or suggesting missing words if you feel the urge. After five to six hours we will be left with a **Bed Full of Songs** written in black ink across the white duvet.

plan b are artists Sophia New and Daniel Belasco Rogers. Since forming in 2001, plan b divide their time between Berlin and London but are quite often in neither.

**This performance takes place in the Gallery. Visitors will also be able to see the exhibition 16 Shades of Grey. See p. 4 & 5 for details.**

[www.planbperformance.net](http://www.planbperformance.net)  
[www.lightnight.co.uk](http://www.lightnight.co.uk)

Thursday 18 October,  
12.30pm & 7.30pm

**Aoife Mannix**

# Growing Up An Alien

Born in a snowstorm in Stockholm, on the stroke of midnight, performance poet Aoife Mannix presents an intimate tale about coming out to friends and family, and looking for a place to belong. Lyrical and captivating, Aoife revisits her nomadic past to explore the relationships that bound her family together and the loss of her mum that threatened to pull them apart. Featuring the live music performance of accordionist Janie Armour, welcome to the magical multi-coloured world of **Growing Up An Alien**. For anyone who has ever wondered where they really fit.

Aoife Mannix is an Irish writer and poet living in London. Her poetry has been widely published in magazines and anthologies, as well as being broadcast on BBC Radio. She performs regularly in the UK and internationally. Her collection *The Elephant in the Corner* is published by Tall Lighthouse.

Written and performed by  
Aoife Mannix. Music written and  
performed by Janie Armour.  
Designed by Kerry Bradley.  
Produced by Mike Kirchner  
for Apples & Snakes.

[www.aoifemannix.com](http://www.aoifemannix.com)



Tuesday 23 & Wednesday 24 October, 8pm

## Goat Island

*(A partnership between University of Leeds Workshop Theatre; School of Performance and Cultural Industries and Leeds Met Studio Theatre)*

# The Lastmaker

Goat Island are internationally acclaimed for their intimate, low-tech, intensely physical performances, which represent a unique hybrid of strategies and techniques drawn from live art, experimental theatre, and postmodern dance. Their work alludes to historical and contemporary issues through the collage-like assembly of text, image and movement.

On this, their first visit to Leeds, the company will perform their ninth and final piece, **The Lastmaker**, which has been developed over the last two years as the concluding chapter to their twenty year history.

Goat Island began work on this piece with an imagined trip to the Hagia Sophia in Istanbul. Fascinated by the lifespan of a building that began as a Byzantine church, was converted into a mosque, and converted again to a museum, the company wondered what kind of performance might be made in response. The performance is also, inevitably, in part about the now concluding history of this performance group. It is a meditation on and a celebration of lastness.

### Performances are at the Workshop Theatre, University of Leeds.

Creation of this piece supported by residencies at the Chicago Cultural Center, USA, the Nuffield Theatre, Lancaster, and the Chelsea Theatre, London, UK, the Alfred ve dvore Theatre, Prague, Czech Republic, Theatre & TD, Zagreb, Croatia, and the Museum of Contemporary Art, Chicago, USA. UK Tour produced by Dance4 and funded by Arts Council England, School of the Art Institute of Chicago, and MAP Fund.



Image by Nathan Mandell

Wednesday 31 October & Thursday 1 November, 7.30pm  
**Third Angel in association with Sheffield Theatres**

# Presumption

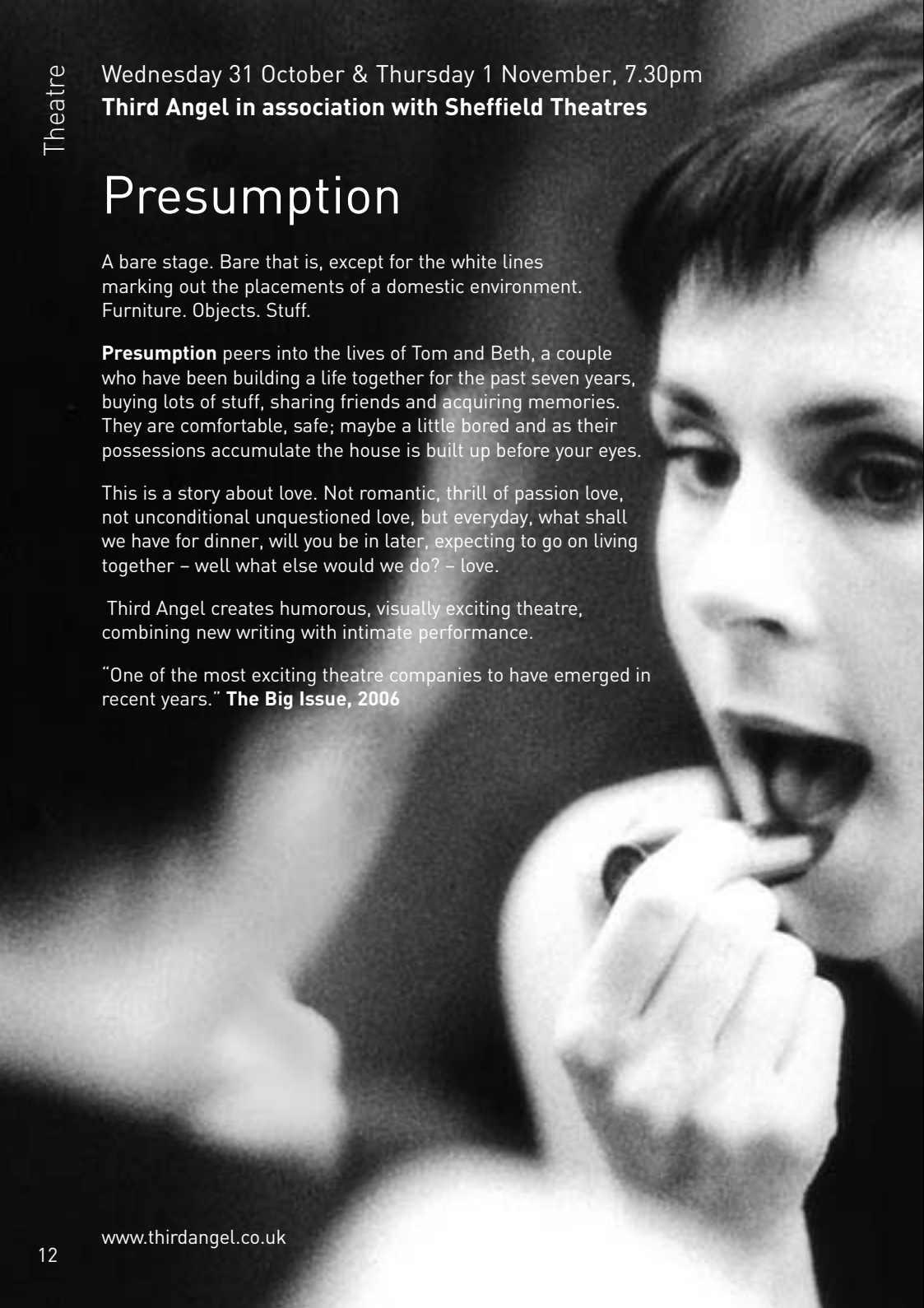
A bare stage. Bare that is, except for the white lines marking out the placements of a domestic environment. Furniture. Objects. Stuff.

**Presumption** peers into the lives of Tom and Beth, a couple who have been building a life together for the past seven years, buying lots of stuff, sharing friends and acquiring memories. They are comfortable, safe; maybe a little bored and as their possessions accumulate the house is built up before your eyes.

This is a story about love. Not romantic, thrill of passion love, not unconditional unquestioned love, but everyday, what shall we have for dinner, will you be in later, expecting to go on living together – well what else would we do? – love.

Third Angel creates humorous, visually exciting theatre, combining new writing with intimate performance.

“One of the most exciting theatre companies to have emerged in recent years.” **The Big Issue, 2006**



Thursday 8 November, 7.30pm

**instant dissidence**

# White Out Conditions

I will tie my left foot to the ceiling, I will make you laugh, I will cover myself in hammers, I will dance upside down... Whatever you want... Come to me.

An exciting dance theatre production that plays between notions of the beautiful and the grotesque. In **White Out Conditions** a man performs a dance his body can no longer do, someone showers under nails, someone dances like a bird, someone loves someone else whose left foot is tied to the ceiling.

Under the artistic direction of Rita Marcalo, **White Out Conditions** seduces and inspires, taking the spectator on an astonishing theatrical journey of distorted reality.

"Marcalo's movement vocabulary is both fascinating and exhausting to watch."

**Leeds Guide**

Instant Dissidence is funded by the Arts Council of England and the Department for Work and Pensions. Supported by Yorkshire Dance, York St John University, Ferens Art Gallery, Wakefield Arts Centre, Leeds Met Studio Theatre, Hull City Council, York City Council, Wakefield District Council and Selby District Council.

[www.instantdissidence.co.uk](http://www.instantdissidence.co.uk)

Ticket Office **0113 812 5998** | Tickets £10 | £7

Wednesday 14 & Thursday 15 November, 7.30pm

## Uninvited Guests

# Love Letters Straight From Your Heart

Let's raise our glasses to long lost loves and current lovers, to mums, to dads and to absent friends.

Uninvited Guests stage an event that is somewhere between a wedding reception, a wake and a radio dedication show. We speak of our own and others' loves – deep, passionate, ambivalent and unrequited – and dedicate songs to them.

If you want to join us on this happy occasion, send a dedication to someone you love to [info@uninvited-guests.net](mailto:info@uninvited-guests.net). Tell us what they mean to you and why you've chosen this piece of music. Please send us these dedications by midnight on Monday 12 November so that we can do our best to include them.

Your letters of love may become part of the show, romantic gestures or signs of friendship, shared publicly between us. Be our witnesses and we'll be yours.

A BAC Scratch and an Arnolfini We Live Here commission.  
Also commissioned by Leeds Met Studio Theatre.  
Uninvited Guests are Arnolfini Associate Artists.



Saturday 24 November, 3-10pm  
New Work Yorkshire

# Perambulator: Nov 07

**Perambulator: Nov 07**, presented in partnership with Leeds Met Studio Theatre, is New Work Yorkshire's unique roving platform for showing and developing live art in Yorkshire. Taking place every 6 months **Perambulator** is undertaken in partnership with different contemporary arts organisations or venues, making each one distinctive in terms of site, structure, duration and approach.

**Perambulator: Nov 07** is an afternoon and evening of live art and performance based work. There will be durational works you can drop in and out of, intimate performances for small audiences, larger performances and mobile works that catch you by surprise - from Yorkshire based emerging and mid-career artists, all members of New Work Yorkshire's E-Forum – taking place in and around the Leeds Met Studio Theatre, and also at unexpected locations around the university.

For information regarding the individual shows and to book call **0113 812 5998**.

For more information about New Work Yorkshire and to get involved contact [www.newworknetwork.org.uk/newworkyorkshire](http://www.newworknetwork.org.uk/newworkyorkshire)

Ticket Office **0113 812 5998** | Tickets £10 | £7



Image by Jonathan Turner, Claire Blundell Jones, Perambulator June 07

Wednesday 28 & Thursday 29 November, 7.30pm

**Rasa**

# Shades of Brown

How can one person's healthy glow be another's social stigma? Around the globe, money and time is poured into tanning or bleaching. Rani Moorthy's celebrated mix of warm and powerful story telling explores the one thing we cannot hide or hide from – our skin.

**Shades of Brown** is a one woman show about melanin from the team that brought you **Curry Tales**. Whatever shade of brown you are or want to be this play will get under your skin.

Written and performed by Rani Moorthy.  
Directed by Linda Marlowe.

There will be an after show talk with Rani Moorthy on Thursday 29 November.

"Tour de force performance from Rani Moorthy...an intelligent and meticulously executed piece of theatre."

**Time Out on Curry Tales**



Wednesday 5 & Thursday 6 December, 7.30pm

**Action Hero**

# A Western

We want to make a western. We have a cowboy hat and some ketchup. We want the scene where our hero walks into the bar and everyone stops talking. We want the scene where the whore begs to be loved. We want to cheat at cards. We want blood and guns. We want it to be noon. We want it to be dusk.

Everyone will have a moustache. All the bad guys laugh. Dust blows across a deserted street. Music.

Together with our audience we reclaim this chaotic, half-arsed, imaginary Western as our own and celebrate the failure of generic heroes, cheap whores and the all-American idol.

Meet at the Studio Theatre and head off to the saloon!

Ticket Office **0113 812 5998** | Tickets £10 | £7





# Theatre Projects

## Book Launch

**Thursday 25 October, 5.30pm**

**Goat Island - Small Acts of Repair: Performance, Ecology and Goat Island**

Members of the company and Professor Stephen Bottoms (University of Leeds) will read sections from the publication **Small Acts of Repair: Performance, Ecology and Goat Island**. The book is structured as a collage text, mirroring the company's collage-based performances, by selecting and juxtaposing extracts from writings by and about Goat Island. It uses ecological thinking as an organising principle, thereby raising issues that extend well beyond the work of this one company. **Small Acts** is edited by Stephen Bottoms and Matthew Goulish, and published by Routledge.

This event is at the Studio Theatre, booking is advised please call **0113 812 5998**.

## For Schools

### Speech Marks

Offering performance studies groups the opportunity to participate in a sustained creative arts project, students will work closely with professional theatre practitioners, visual artists and Leeds Met University staff to present an original performance work of their own during a short festival in the Studio Theatre.

Working from an exhibition stimulus in the Gallery, students will be led through a devising process and create a new performance work in response to the original piece, Clare Charnley's **A Gift of Tongues** (see p.2&3). Working principally at your own school or college the participating groups will be aiming toward developing 20 minute performances. These short works will be created with the assistance of practising contemporary theatre makers who will be on hand at strategic stages through the creative process and performed in a final sharing at the Studio Theatre with the other participating groups in the Speech Marks project.

This project is particularly relevant to those groups about to embark on the A2 devising module during the Autumn 2007 term.



## **A:CT**

We are continuing our project, A:CT Access: Contemporary Theatre, in which Teachers, Lecturers and Theatre Education Artists are working together and with visiting artists to create an original devised work. This final work will be performed by the group at the Studio Theatre during Spring 2008.

The A:CT project is an opportunity for participants to work with a number of experienced theatre practitioners; so far including artists from Forced Entertainment and Third Angel. Through working with these experienced artists and with each other the participants receive invaluable fresh perspective on the business of theatre education and the creative process.

## **Workshops**

Most of the companies and artists performing in the season offer the opportunity to come to your school or college and work with performance students on their particular show or on their general practice of making work.

Each company is only able to offer one workshop during their stay with us so it is recommended that you enquire early for these workshops.

**For more information regarding any of these projects please contact Stephen Burke, Theatre Projects Officer on 0113 812 3499 or [s.burke@leedsmet.ac.uk](mailto:s.burke@leedsmet.ac.uk)**

# Gallery Education

## Talk

**Wednesday 3 October, 6-7pm**  
**Clare Charnley and Leonor da Silva**

An informal discussion in the gallery with both Clare Charnley (*The Gift of Tongues*) and Leonor da Silva (*16 Shades of Grey*). This is an opportunity to meet with the artists as they explore connections and common elements across their differing practices.

## Family Fun Day

**Saturday 13 October, 11am – 2pm**  
**Big Draw**

Come and take part in this family friendly event. Dip your toe into the world of drawing by using our 'creation stations' where you will be able to try out different techniques to make some art, take part in fun activities, meet artists, performers and storytellers as well as helping us throw a big party!

This event is part of the Big Draw month, there will be a series of workshops and events running up to the big day, please keep an eye on our website [www.leedsmet.ac.uk/arts](http://www.leedsmet.ac.uk/arts) for further developments.





## Talk

### **Wednesday 7 November, 6-7pm An Evening with Joash**

This evening is a chance to celebrate the life and work of Joash Woodrow. Woodrow initially trained at Leeds at College of Art and we at Leeds Met Gallery are proud to host the largest retrospective of his work to date.

Join Gallery Curator Moira Innes, Andrew Stuart from 108 Fine Art and the artist's brother, Saul, in conversation as they discuss the work on show, as well as Woodrow's broader practice and life.

**To book any of these gallery events, please call 0113 812 3140 or email [gallerytheatre@leedsmet.ac.uk](mailto:gallerytheatre@leedsmet.ac.uk)**

## Education

The Education Department supports and enriches educational training through a variety of services and events designed to extend knowledge and understanding of contemporary art and to bring art into the lives of our visitors.

Through encouraging visitors to engage with the different types of artwork on display, we wish to promote confidence in being in a gallery environment and self-confidence in personal interpretations of art.

Our lively and innovative education programme offers talks, workshops, outreach activities and tours to all ages. Please check our website for forthcoming events or email our Gallery Education Officer Shelley Hollingdrake on [s.hollingdrake@leedsmet.ac.uk](mailto:s.hollingdrake@leedsmet.ac.uk)

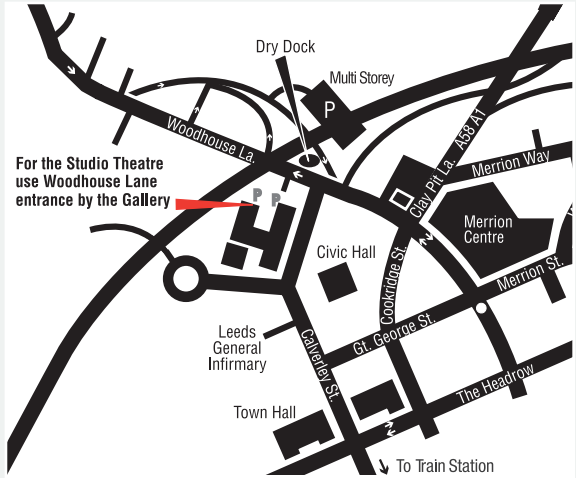
# WHERE TO FIND US

Gallery & Studio Theatre  
Leeds Metropolitan University  
Civic Quarter  
Leeds, LS1 3HE

**By Car:** Please see map for instructions. On site parking available after 4.30pm and several paying car parks close by.

**Bus:** Any stopping on Woodhouse Lane (near The Fenton Pub). The Free City Bus runs frequently until 7.10pm from the train and bus stations and stops on Portland Way outside Leeds Met. For more information call the Metro Line 0113 245 7676.

**Train:** We are a fifteen minute walk from Leeds City Station.



## ACCESS

- Gallery 1st floor accessible via lift
- Induction loop in Studio Theatre
- Portable induction loop available in Gallery
- Wheelchair access to toilets and bar
- Large print brochure available
- Gallery notes available in large print
- Car parking available for disabled patrons. Please contact us to book a space
- Wheelchair access from car park to Gallery ground floor and Studio Theatre

For further information or to discuss your requirements please call **0113 812 3140**.

# HOW TO BOOK

In person: Call into Gallery & Studio Theatre office between 9am and 4pm Monday-Friday.

T: Box Office: **0113 812 5998**  
Information: **0113 812 3140**

E: **gallerytheatre@leedsmet.ac.uk**  
W: **www.leedsmet.ac.uk/arts**

## THEATRE

### Tickets

**Full price** £10 | **Concession** £7 | **Groups** £5 for groups of 10 or more

Concessions are available for students, Leeds Met Staff, OAPs, unwaged, under 16's, disabled and Equity members.

We advise early booking as the theatre has a limited seating capacity. There are no reservations. We accept cash, cheque, debit cards and most major credit cards.

## GALLERY

### Admission is free

Exhibition opening hours | Mon-Sat 11am-5pm & Wed 11am-7pm

For regular updates and special offers email **gallerytheatre@leedsmet.ac.uk** with the word "subscribe" as the subject.



Leeds  
CITY COUNCIL



Leeds  
Metropolitan  
University