

ASSESSMENT, LEARNING & TEACHING STRATEGY 2008-12

LEEDS METROPOLITAN UNIVERSITY



Assessment, Learning & Teaching Strategy 2008-12

Leeds Met puts students at the heart of everything we do, enabling them to maximise potential and use all their talents to the full.

To do so it is important that we value:

- Enhancing the learning experience of all students;
- Rewarding excellent teaching and using informed, appropriate approaches to assessment, learning and teaching;
- Coaching students to engage in their own learning;
- Promoting inclusive approaches that recognise and celebrate the diversity of our students;
- Encouraging and fostering reflection and lifelong learning by students and staff.



We will act to ensure our assessment, learning and teaching practice is:

1. Inclusive

- ensuring that our practice reflects our espoused values by incorporating appropriate ethics and good citizenship within all aspects of curriculum provision;
- developing world-wide horizons through focusing on global perspectives, international scholarship and cross-cultural capability into our curricula and assessment, learning & teaching approaches;
- going beyond compliance, encouraging recruitment of disabled students and minority groups and providing them with a positive learning experience;
- enabling our Regional University Network partners to share learning with us in mutually supportive ways.

2. Appropriate

- using up-to-date, appropriate and enabling technologies to enhance learning;
- focusing on enhancing the first-year experience and induction of new students to maximise student potential;
- integrating fit-for-purpose assessment into learning, particularly using feedback to directly influence student learning;
- supporting skills development for postgraduate students together with expertise in assessment, learning and teaching approaches;
- using educational research to inform practice on assessment, learning and teaching and promoting scholarly approaches by staff and students to assessment, learning and teaching.

3. Effective

- helping students to engage in learning in exciting, flexible, stimulating environments where creativity and individuality of approach are encouraged;
- making clear links between the knowledge base of the curriculum and research;
- encouraging staff to coach each other, fostering mutually supportive approaches to development including peer observation of teaching;
- recognising and rewarding excellent teaching.

4. Reflective

- encouraging learning in partnership with students and incorporating student perspectives when developing new initiatives;
- encouraging daily reflection and continuous professional development;
- encouraging creative thinking about how to make best use of the existing estate as well as new learning spaces under development.

5. Transformative

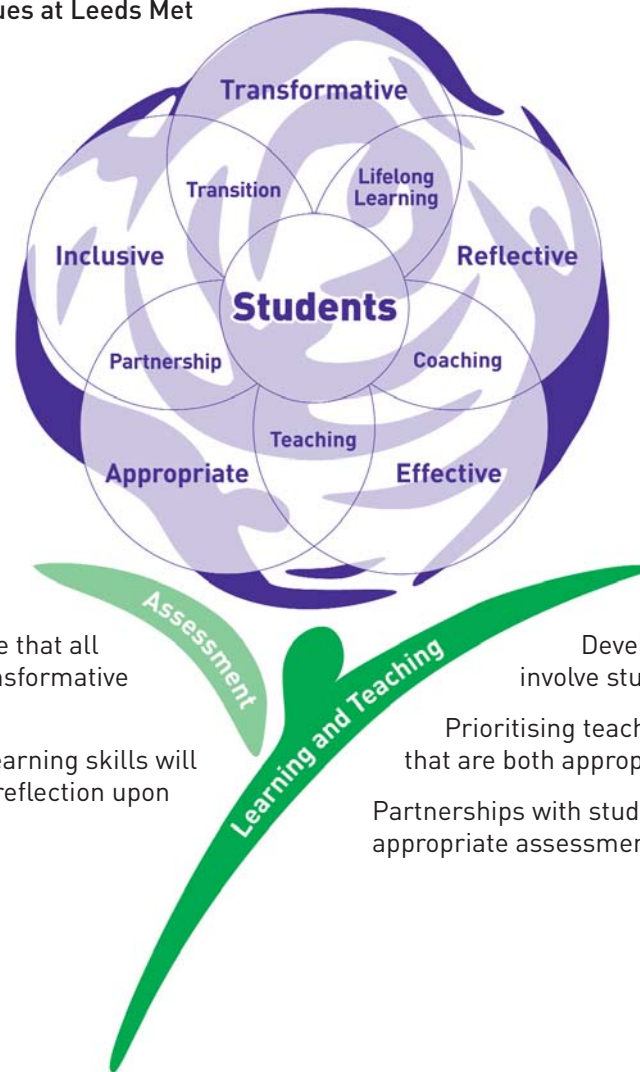
- offering an engaging, transformative and rounded experience for our students e.g. through involvement with cultural activities, sports, volunteering, working with industry and our partners;
- fostering world-wide horizons for both staff and students through international experiences at home and overseas;
- promoting student employability and engaging our students in work-related learning;
- broadening student perspectives to enable them to develop skills for learning, information literacy and enterprise.

This strategy will be reinforced each year with a statement of priorities for action for the next academic year.

The statement will include specific, measurable targets to be used as performance indicators for the University and Faculties.



Assessment, Learning & Teaching Values at Leeds Met



A focus on transition will help to ensure that all students are able to benefit from a transformative HE experience.

Focus on the development of lifelong learning skills will help to transform the learner through reflection upon their learning.

Development of coaching will help to effectively involve students in reflection on their practice.

Prioritising teaching will help to ensure learning experiences that are both appropriate and effective.

Partnerships with students will help to ensure inclusive and appropriate assessment, learning & teaching.

Leeds Met puts students at the heart of everything we do, enabling them to maximise potential and use all their talents to the full.